



THE CURVE

Pagkrati

The Curve is a modern residential development located in the lively neighborhood of Pagkrati, Athens. The building features contemporary architecture with bright, spacious interiors and high-quality finishes. Set within walking distance of parks, cafes, shops, and cultural landmarks, The Curve offers both comfort and convenience in one of Athens' most well-connected areas.

New Development



Damareos 178 Pagkrati, a vibrant Athens neighborhood with cafes, galleries, and green spaces.

Around You

Places near Damareos st.



Panathenaic Stadium

Historic marble stadium
hosting sports events.
7 min walk



National Garden

Large green park with
peaceful walking paths.
18 min walk



Evangelismos Metro Station

Metro access to central
Athens locations.
5-6 min walk



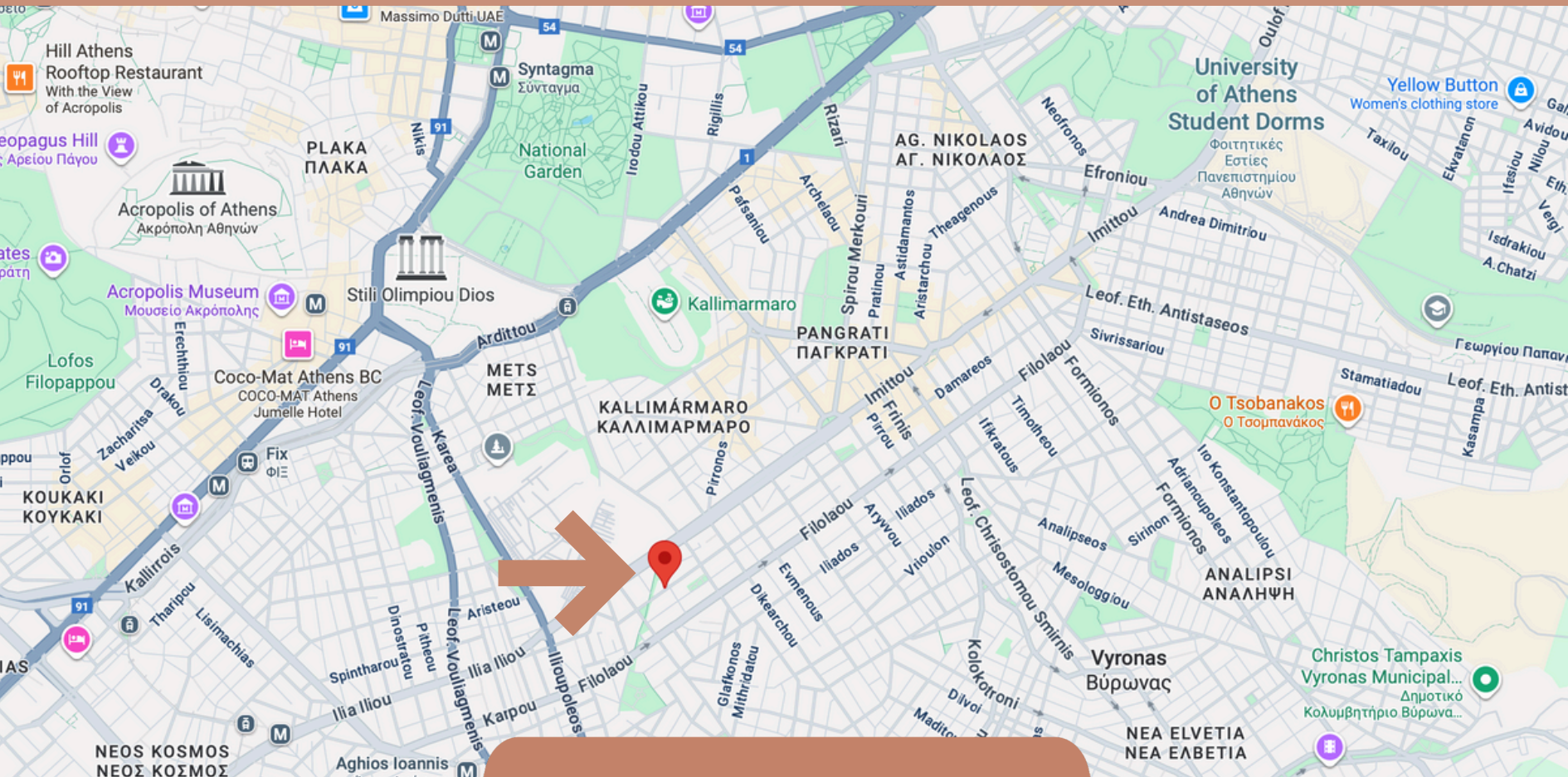
Byzantine and Christian Museum

Museum showcasing Byzantine
religious art.
15 min walk



Acropolis

The iconic ancient citadel
featuring historic structures
like the Parthenon and
Erechtheion, symbolizing
classical Greek architecture
and history - 20 min walk



LOCATION

ADVANTAGES OF LIVING IN PAGKRATI

Central Location

Cultural & Historical Significance

Vibrant Community

Green Spaces & Recreational Area

Educational Institutions

Safety & Community Feel

Architectural Charm

Economic Benefits



About the Project

The development features sleek contemporary architecture with bright, spacious interiors. Each residence is finished to a high standard and equipped with energy-efficient appliances.

Residents can enjoy shared facilities including a rooftop garden with panoramic views, a communal pool, and secure underground parking - encouraging a comfortable and connected lifestyle.

With Pagrati's steadily growing real estate market, The Curve presents a strong opportunity for long-term value and appreciation.

Situated in the vibrant neighborhood of Pagkrati, it offers convenient access to parks, cafés, shops, and cultural landmarks. Its central position provides excellent public transport connections for easy commuting across Athens.



DESIGN

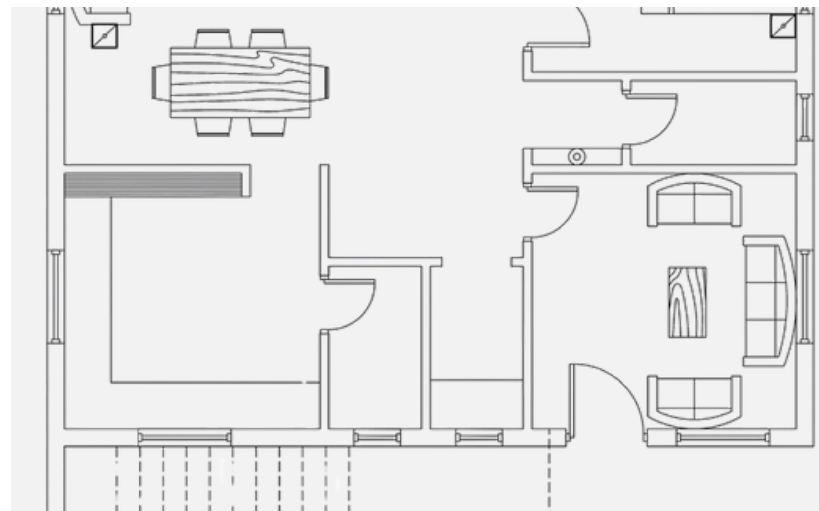
Every detail of The Curve reflects a harmony between movement and balance. Its fluid architecture embodies modern elegance, where form and function coexist seamlessly.

Inspired by the natural flow of organic lines, The Curve redefines contemporary living through refined materials, open spaces, and timeless design that enhances everyday life.



DESIGN





LAYOUT

THE ROOF GARDEN

Rising above the city, the roof garden at The Curve offers a peaceful escape surrounded by greenery and breathtaking views. Designed as an urban oasis, it blends natural beauty with modern comfort - a space to relax, connect, and enjoy moments of serenity.

At The Curve, even the rooftop becomes a masterpiece of design and lifestyle.



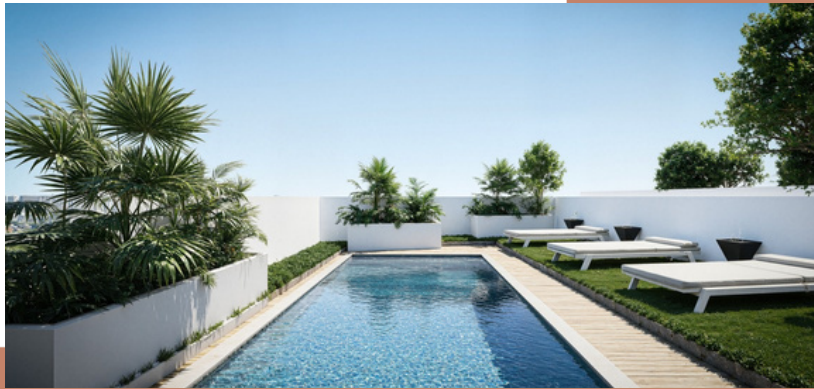
INTERIOR



BEDROOMS



OUTDOOR AREA POOL & GARDEN





LUXURIOUS
BUILD
QUALITY

UNITS	FLOOR	INDOOR AREA	OURDOOR AREA	SPECIFICATIONS	Price (€)	Booking
1-A	1st	50	18	living room with open kitchen, 1 WC, 1 bathroom 1 bedroom With Parking	-	SOLD
1-B	1st	45	18	living room with open kitchen, 1 Storage Room, 1bathroom 1 bedroom With Parking	-	SOLD
1-C	1st	73	22	living room with open kitchen, 2 bathrooms, 2 bedrooms With Parking	330,000	
2-A	2nd	50	18	living room with open kitchen, 1 WC, 1 bathroom 1 bedroom With Parking	230,000	
2-B	2nd	45	18	living room with open kitchen, 1 Storage Room, 1 bathroom 1 bedroom With Parking	-	SOLD
2-C	2nd	73	22	living room with open kitchen, 2 bathrooms, 2 bedrooms With Parking	-	SOLD
3-A	3rd	50	18	living room with open kitchen, 1 WC, 1bathroom 1 bedroom With Parking	240,000	

RATE CARD

UNITS	FLOOR	INDOOR AREA	OURDOOR AREA	SPECIFICATIONS	Price (€)	Booking
3-B	3rd	45	18	living room with open kitchen, 1 Storage Room, 1bathroom 1 bedroom With Parking	215,000	
3-C	3rd	73	22	living room with open kitchen, 2 bathroom, 2 bedroom With Parking	350,000	
4-A	4th	50	18	living room with open kitchen, 1 WC, 1bathroom 1 bedroom With Parking	250,000	
4-B	4th	45	18	living room with open kitchen, 1 Storage Room, 1bathroom 1 bedroom With Parking	225,000	
4-C	4th	73	22	living room with open kitchen, 2 bathroom, 2 bedroom With Parking	365,000	
5-A	5th	50 + Roof Garden	18	living room with open kitchen, 1 WC, 1bathroom 1 bedroom Roof Garden 50m² with Jacuzzi & With Parking	320,000	
5-B	5th	73 + Toof Garden	22	living room with open kitchen, 1 WC, 1bathroom 1 bedroom,Roof Garden 70m² with Jacuzzi & With Parking		SOLD

RATE CARD

CONTACT US

Looking to Buy a new property or Sell an existing one? Bofkers Real Estate provides an easy solution.



GR Xenokratous 39, Athens 10676, Greece
LEB Kaslik Bofkers Building
DXB Business Bay Parklane Tower 711



GR +30 698 444 7447
LEB +961 70 041 111
DXB +971 58 538 7744



info@bofkers.com



www.bofkers.com

Follow Us



[bofkers](#)



[bofkers](#)